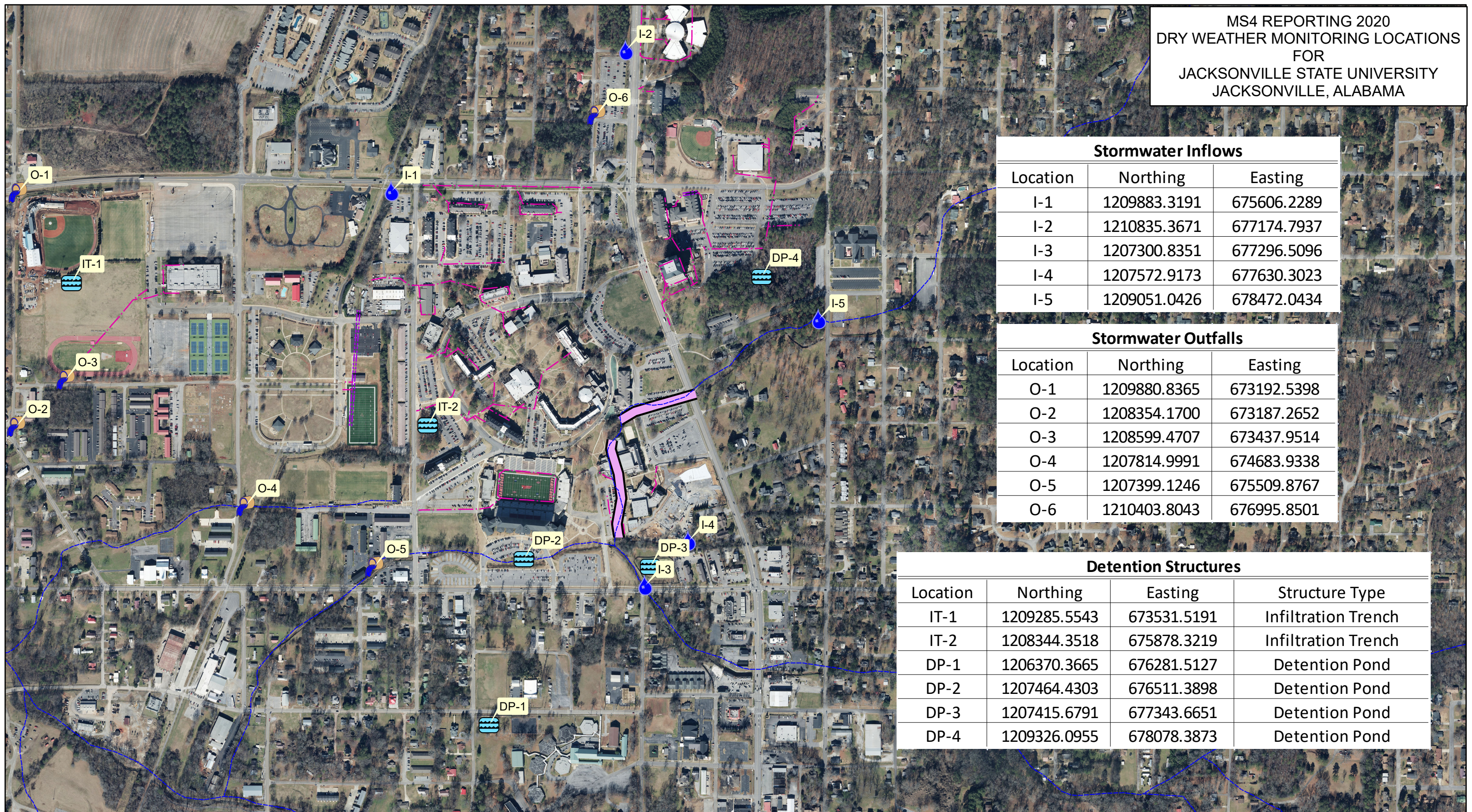


MS4 REPORTING 2020
 DRY WEATHER MONITORING LOCATIONS
 FOR
 JACKSONVILLE STATE UNIVERSITY
 JACKSONVILLE, ALABAMA



Stormwater Inflows		
Location	Northing	Easting
I-1	1209883.3191	675606.2289
I-2	1210835.3671	677174.7937
I-3	1207300.8351	677296.5096
I-4	1207572.9173	677630.3023
I-5	1209051.0426	678472.0434

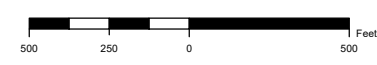
Stormwater Outfalls		
Location	Northing	Easting
O-1	1209880.8365	673192.5398
O-2	1208354.1700	673187.2652
O-3	1208599.4707	673437.9514
O-4	1207814.9991	674683.9338
O-5	1207399.1246	675509.8767
O-6	1210403.8043	676995.8501

Detention Structures			
Location	Northing	Easting	Structure Type
IT-1	1209285.5543	673531.5191	Infiltration Trench
IT-2	1208344.3518	675878.3219	Infiltration Trench
DP-1	1206370.3665	676281.5127	Detention Pond
DP-2	1207464.4303	676511.3898	Detention Pond
DP-3	1207415.6791	677343.6651	Detention Pond
DP-4	1209326.0955	678078.3873	Detention Pond

DATA: Source: Esri, DigitalGlobe, GeoEye, Earthstar Geographics, CNES/Airbus DS, USDA, USGS, AeroGRID, IGN, and the GIS User Community
 PROJECTION: NAD_1983_StatePlane_Alabama_East_FIPS_0101_Feet
 AUTHOR: Ryan Baker
 DATE: 3/1/2021
 DOCUMENT PATH: P:\18003 JSU Annual Stormwater Report_GISJSU MS4 DRY WEATHER MONITORING-2020.mxd



1 inch = 600 feet



STORMWATER LEGEND

- DETENTION STRUCTURES
- STORMWATER INFLOW
- STORMWATER OUTFALL
- STREAM (BLUE LINE)
- JSU STORM SEWER BOX CULVERT
- STORM SEWER LINE
- STORM SEWER LINE (DBL)



JBW&T, Inc.
 Consulting Engineering and Land Surveying

3736 SOUTH 11TH STREET • GADSDEN, ALABAMA 35904
 TELEPHONE (256) 547-6379 • FAX (256) 547-3464
 www.jbw.com

"Helping to Make the World a Better Place"

DISCLAIMER
 This document is a representation of the survey area for planning purposes and does not represent a legal description or actual surveying/testing/interpretation to determine the actual values. Its intent is to illustrate potential real world events as described by GIS data.