



**FACULTY COMMONS**  
JACKSONVILLE STATE UNIVERSITY

# 2024 FACULTY RESEARCH SYMPOSIUM

AN INTERDISCIPLINARY SHOWCASE  
OF RESEARCH AND CREATIVE  
SCHOLARSHIP AT  
JACKSONVILLE STATE UNIVERSITY

NOVEMBER 7TH  
MERRILL HALL





2024 FACULTY RESEARCH SYMPOSIUM - FACULTY COMMONS

# TABLE OF CONTENTS

<b>NOTE FROM FACULTY COMMONS</b>	<b>4</b>
<b>OVERVIEW OF DAY</b>	<b>5</b>
<b>FACULTY REFLECTIONS: CONNECTING IDEAS SEQUENTIAL SESSIONS ONE</b>	<b>6</b>
<b>SEQUENTIAL SESSIONS ONE (9-11:50)</b>	<b>7</b>
<b>FACULTY REFLECTIONS: CONNECTING IDEAS FACULTY SCHOLAR LECTURER KEYNOTE PRESENTATION</b>	<b>13</b>
<b>KEYNOTE LUNCHEON PRESENTATION (12:00-1:30)</b>	<b>14</b>
<b>FACULTY REFLECTIONS: CONNECTING IDEAS SEQUENTIAL SESSIONS TWO</b>	<b>15</b>
<b>SEQUENTIAL SESSIONS TWO (2-3:50)</b>	<b>16</b>
<b>PRESENTATION FORMATS</b>	<b>19</b>
<b>CONCLUDING THOUGHTS</b>	<b>21</b>
<b>AWARDS RECEPTION</b>	<b>22</b>
<b>SPECIAL THANKS</b>	<b>23</b>

# A NOTE FROM FACULTY COMMONS

Dear Jax State Faculty,

Welcome to the 2024 Faculty Research Symposium, our annual gathering where the remarkable research and creative scholarship produced at Jacksonville State University takes center stage. This interdisciplinary showcase is a celebration of the dedication, talent, and intellectual curiosity that each of you brings to your work, and it's truly a privilege to share in these accomplishments with colleagues from across the university.

I want to extend my heartfelt gratitude to every faculty member who signed up to present today. Your willingness to share your expertise and insights with our academic community is so appreciated. Please know that we value the time and effort you've dedicated to preparing for this event.

Thank you also to our volunteer judges, whose thoughtful engagement and encouragement help make this a meaningful experience for all. Your involvement is invaluable in highlighting the breadth and depth of faculty achievements here at Jax State.

To our faculty colleagues attending the Symposium, thank you for making time in your schedules to be here and support one another. Your presence exemplifies the collaborative spirit that defines our university, where we uplift and celebrate each other's work, learning and growing together.

And, of course, I am especially grateful to the Faculty Research Symposium Committee. This dedicated group of faculty volunteers approaches the planning and organization of this event with an enthusiasm that's both inspiring and contagious. The success of today's event is a direct reflection of their hard work and commitment.

Whether you are here to present, judge, attend, or assist behind the scenes, please know that your contributions are appreciated. Together, we make the Faculty Research Symposium a valuable tradition at Jax State, one that continues to honor and celebrate the many ways our faculty advance knowledge and foster creativity.

Thank you for all you do to make today, and every day, a success.

With appreciation,

*Mica Meckam*

Director, Faculty Commons

# OVERVIEW OF THE DAY

## Time & Location Session

**9:00-10:00 am**

**Morning Snacks**

Basement, Merrill Hall

**9:00-11:50 am**

**Sequential Sessions (1)**

Varied Rooms, Merrill Hall

**12:00-1:30 pm**

**Faculty Scholar Lecturer**

Keynote Luncheon

Featuring Dr. Rashad  
Ahmed with Guest, Dr.

Carmine Di Biase

B01, Merrill Hall

**2:00-4:00 pm**

**Sequential Sessions (2)**

Presentations, Varied  
Rooms, Merrill Hall

**5:00-6:00 pm**

**Awards Reception,**

Atrium, Merrill Hall

# FACULTY REFLECTIONS: CONNECTING IDEAS: SEQUENTIAL SESSIONS ONE (9:00-11:50)

Which session(s) did you attend?

- **Time(s):**
- **Speaker(s):**
- **Topic(s)/Title(s):**

As you listen...

- **Curiosity & Impact:** As you listen to today's presentations, what are you most curious to learn from fields outside your own? How might the ideas shared today inspire or impact your own research, teaching, or service?
- **Collaboration Brainstorm:** Imagine a collaboration with a colleague in a completely different discipline from yours. What unique skills or knowledge would you each bring? Write a few ideas for a potential project that you began thinking about as you listened to some of today's presenters.
- **Reflections:** Reflect on something you learned or something you can share with others from today's presentations.

**Notes:**

# SEQUENTIAL SESSIONS ONE (9:00-11:50)

## Time & Location    Session

9:00-9:50 am

**MH 110  
(Long  
Presentations)**

**Unlocking Potential: Transforming Faculty Success Through Dynamic Mentorship**

Kimberly Warfield, Associate Professor, Instructional Leadership; Stacey Gill, Associate Professor, Instructional Leadership; Randi Peel, Assistant Professor, Instructional Leadership

**Perceptions of Faculty Inclusivity of LGBTQ+ Students**

Jianping Coco Huang, Associate Professor, Marketing; Mark Sciuchetti, Associate Professor, Geography

**MH B01  
(Short  
Presentations)**

**School of Nursing and Career Tech Program Collaboration**

Yolanda Chandler, Assistant Professor, Nursing; Stacy Mikel, Assistant Professor, Nursing; Lori Bobo, Associate Professor, Nursing; Hungwei Tseng, Associate Professor/Senior Instructional Designer

**To Inspire and Fulfill: Teachers and Librarians in Pedagogical Partnership**

Jennie Vaughn, Associate Professor, English; Mysti Nichols, Instructor of English and Dr. Laura Pitts, Research Librarian

**Validating the Instant Pot: A Novel Approach to Sterilization for Scientific Research and Secondary Education Science Labs**

Ashley Turner  
Assistant Professor of Teacher Education

# SEQUENTIAL SESSIONS ONE (9:00-11:50)

## Time & Location    Session

**9:00-9:50 am**

**MH B02  
(Short  
Presentations)**

**Will “Open” Disrupt Your Order of Instruction?  
Theories and Practices**

Hanrong Wang, Distinguished Professor, Law/Technology Librarian

**“We can transform dying from a medical experience to a human experience”: Occupational Legitimacy and Professionalization of End-of-Life Doulas**

Sarah Donley, Associate Professor, Sociology and Political Science; Casey Fannin

**MH B10  
(Panel  
Presentations)**

**JSU’s Faculty Senate: Past, Present, Future**

Heidi Dempsey, Faculty Senate President; Chris Clark, Faculty Senate Secretary; David Dempsey, Faculty Senate President-Elect; Barbara Norvell, Faculty Senate Historian; Jenna Ridlen, Faculty Senate Faculty Advocacy Committee Chair; David Thornton, Faculty Senate Policies and Campus Planning Committee Chair

**10:00-10:50 am**

**MH 110  
(Long  
Presentations)**

**Shell histology of a new species of fossil leatherback turtle from the Oligocene of Alabama**

Michael Burns, Associate Professor, Biology

**Analyzing the Performance of Affordable Network Attached Storage Based on Single-Board Computers**

Eric Gamess, Associate Professor, Computer Science; Graham Hester

**MH B01  
(Short  
Presentations)**

**Using Interprofessional Simulation to Identify Perceptions and Feelings of Healthcare Professionals Caring for Transgender Patients**

Danyel Munster, Assistant Professor of Nursing; Dr. Serena Gramling, Associate Professor, PhD, RN, CNE, COI and Dr. Chris Clark, Assitant Professor and Program Director for the Master's in Athletic Training Program, EdD, LAT, ATC



# SEQUENTIAL SESSIONS ONE (9:00-11:50)

## Time & Location Session

### 10:00-10:50 am

#### MH B01 (Short Presentations)

**Evaluating Trail Effectiveness of Trail Drainage Features**  
Ross Martin, Assistant Professor, Chemistry and Geosciences

**Financial Literacy and Markets: Insights from UN Human Development Index (HDI) Data**

Amy Simon, Instructor, Management and Marketing; Dr. Benjamin B. Boozer, Jr. - Daugette Endowed Professor of Finance

### 10:00-11:00 am

#### MH Atrium (Poster Presentations)

**Cultivating Healthy Habits: A COM-B Analysis of the Girls Empowering Movement**

Kelsey McEntyre, Assistant Professor, Kinesiology

**Assessing Student Success - Academic Performance and Predictive Indicators**

Celestino Valentin, Department Chair, Lyons and Co. Inc., Department of Management and Marketing; Dr. Marie A. Valentin; Dr. Albi Alikaj

**Transforming Collaborative Practice in Healthcare: Using Immersive Simulations to Revolutionize Inter-Professional Education**

Jessica Lockhart, Assistant Professor, Nursing; Megan Moore, Assistant Professor, Nursing; Douglas Stephens, Associate Professor, Nursing; Danyel Munster, Assistant Professor, Nursing; Tammy Morrow, Assistant Professor, Nursing

# SEQUENTIAL SESSIONS ONE (9:00-11:50)

## Time & Location    Session

**10:00-11:00 am**

**MH Atrium  
(Poster  
Presentations)**

**“It’s A Miserable, Scary, Stressful Time To Be A Librarian”: Attitudes and Opinions of Alabama Library Workers Regarding Intellectual Freedom and Censorship**  
Laura Pitts, Assistant Professor, Library Services

**Aesthetic Resilience Born out of Trauma**  
Sarah Burns, Assistant Professor of Music Education,  
Choral/Elementary

**11:00-11:50 am**

**MH 100  
(Long  
Presentations)**

**Three Years of Excavation at Kotið, North Iceland**  
Kathryn Catlin, Assistant Professor, Anthropology

**Solid Waste Comes to Life in Alessandro Casola's comedy, 'A Munnezza**  
Carmine Di Biase, Distinguished Professor of English,  
Emeritus

**MH 109  
(Long  
Presentations)**

**"Repentance is quite out of date": Oscar Wilde the Iconoclast vs. Oscar Wilde the Catholic in His Theatrical Comedies**  
Marija Reiff, Assistant Professor of 19th-Century British Literature

**Adapting Time and Space . . . and Pastries: The Bakery Girl of Monceau**  
Larry Gray, Professor, English

# SEQUENTIAL SESSIONS ONE (9:00-11:50)

## Time & Location    Session

11:00-11:50 am

**MH 110  
(Long  
Presentations)**

**“Fan, Friend, or Foe: An Exploratory Scale Development of Perception of Social Media Influencers on Instagram**  
Kate Stewart, Assistant Professor, Communication

**Exploring Faculty Attitudes Toward AI Use in the Classroom: A Study in Progress by the Houston Cole Library's Instruction Committee**

Laura Pitts, Assistant Professor, Library Services; Karlie Johnson, Associate Professor; Laurie Heathcock, Associate Professor; Paula Barnett-Ellis, Professor; Kim Westbrooks, Associate Professor

**MH B01  
(Short  
Presentations)**

**Bioinformatics Analysis of the INSR Variant c.1628C>T (p.Thr543Met) in Type 2 Diabetes Mellitus**

Brittany White, Biology Adjunct Instructor

**A University Interprofessional Exercise**

Chris Clark, Assistant Professor, Master's in Athletic Training Program; Dr. Jennier Savage Burgett, Assistant Professor and Clinical Education Coordinator

**The Final Frontier: Boldly Creating Connections Like No Course Has Created Before**

Kimber Wickersham, Social Work Department Head; Serena Gramling, Associate Professor, PhD, RN, CNE, COI

**MH B10  
(Panel  
Presentations)**

**The Role of AI in Modern Education**

Monica Trifas, Associate Professor, Computer Science; Dr. Jiangping Huang, Associate Professor, Marketing and Dr. Arup Ghosh, Associate Professor, Computer Science

# SEQUENTIAL SESSIONS ONE (9:00-11:50)

## Time & Location

## Session

11:00-11:55 am

**MH B02  
(Other/Creative  
Presentations)**

**“Getting Creative in Your Academic Writing: A  
Presentation and Generative Workshop**  
Kimberly Southwick-Thompson  
Assistant Professor, English

**Virtual Environments for Teaching Art History: A  
Simulation of St. Polyeuktos**  
Maureen McGuire, Assistant Professor, Art and Design

## Additional Notes:

# FACULTY REFLECTIONS: CONNECTING IDEAS

## FACULTY SCHOLAR LECTURER KEYNOTE PRESENTATION

**Speaker:** Dr. Rashad Ahmed with Guest Dr. Carmen Di Biase

**Topic/Title:** Verses and Algorithms: The Future of Literary Translation

As you listen...

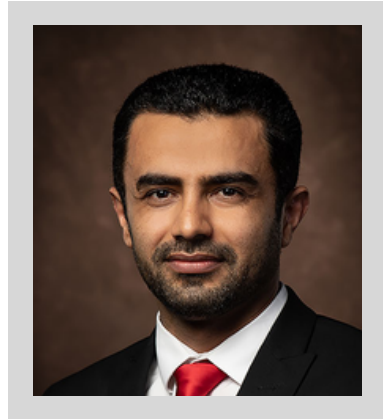
- What interested you most about today's keynote lecture?
- What is one idea or insight from this presentation that surprised or challenged you? How might it influence your thinking or approach in your own field?
- How do you view the role of innovation or new technologies in your discipline? Are there areas where you feel they enhance your work, or are there areas where traditional approaches remain essential?
- How can learning about approaches or challenges in other fields shape your understanding of your own discipline? Is there a perspective from today's presentation that you might incorporate into your work or teaching?

**Notes:**

# Keynote Luncheon

## 2024 FACULTY SCHOLAR LECTURER AWARD WINNER

DR. RASHAD AHMED  
ASSOCIATE PROFESSOR,  
ENGLISH

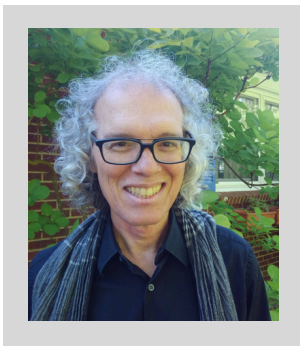


This presentation will be delivered in two parts. In the first part, Dr. Rashad Ahmed will provide a brief overview of his research, with a particular focus on the following topic:

### **Verses and Algorithms: The Future of Literary Translation**

This segment will present the findings of a comparative analysis that explores the differences between AI and human translators in the context of Arabic poetry—a genre distinguished by its intricate structure and profound cultural resonance. Traditional translation methods often struggle to preserve the artistic integrity of the original works, leading to a loss of meaning. This study assesses AI's ability to capture essential poetic elements such as layout, rhyme, and thematic depth, highlighting both its potential and its limitations. The findings indicate that while AI can enhance the technical aspects of translation, the role of human translators remains vital in safeguarding cultural and artistic nuances.

In the second part of the presentation, Dr. Carmine Di Biase, (Distinguished Professor Emeritus, English) will join Dr. Ahmed to discuss a translation project they have been collaborating on, followed by a bilingual poetry reading.



Guest Appearance By  
Dr. Carmine Di Biase,  
Distinguished Professor  
Emeritus, English

- **B01 Merrill Hall**
- **12:00-12:30 (Lunch in Corridor)**
- **12:30-1:30 (Lecture with Poetry Reading)**

# FACULTY REFLECTIONS: CONNECTING IDEAS

## SEQUENTIAL SESSIONS TWO (2:00-3:50)

Which session(s) did you attend?

- **Time(s):**
- **Speaker(s):**
- **Topic(s)/Title(s):**

As you listen...

- **Curiosity & Impact:** As you listen to today's presentations, what are you most curious to learn from fields outside your own? How might the ideas shared today inspire or impact your own research, teaching, or service?
- **Collaboration Brainstorm:** Imagine a collaboration with a colleague in a completely different discipline from yours. What unique skills or knowledge would you each bring? Write a few ideas for a potential project that you began thinking about as you listened to some of today's presenters.
- **Reflections:** Reflect on something you learned or something you can share with others from today's presentations.

### NOTES:

# SEQUENTIAL SESSIONS TWO (2:00-3:50)

## Time & Location    Session

**2:00-2:25 am**

**MH Atrium  
(Other/Creative  
Presentations)**

**"The 35th Floor"**  
Larry Gray  
Professor, English

**2:00-2:50 am**

**MH B01  
(Short  
Presentations)**

**B-B-B-Bad Methodists: Methodism's Negative  
Framing in 18th-century It-Narratives**  
Christopher Douglas, Associate Professor, English

**"It's Always Nice to Have People That Has Your  
Back": Black Appalachian Women Working Within  
and Beyond State-led Agricultural Organizations**  
Jed DeBruin, Assistant Professor, Geography

**Opportunities of Artificial Intelligence for  
Supporting Complex Problem-Solving**  
Monica Trifas, Associate Professor, Computer Science

**MH B10  
(Panel  
Presentations)**

**Creative Wellness Programs in Academic Libraries**  
Laura Pitts, Assistant Professor, Library Services; Paula  
Barnett-Ellis, Kim Westbrook, Allison Boswell



## SEQUENTIAL SESSIONS TWO (2:00-3:50)

### Time & Location    Session

3:00-3:50 am

**MH 100  
(Long  
Presentations)**

**Accessing Texts in the Public Domain With a Focus on Women's Literature**

Joanne E. Gates, Professor Emerita, English

**Pop Culture Identity and Behavior Change in the Harry Potter Fandom**

Brianna Turgeon, Associate Professor, Sociology; Jacob Church, Assistant Professor; Tierra James, Auburn University; Leonela Martinez Ramirez, Undergraduate Student; Alicia Carter, Graduate Student, University of Tennessee -Knoxville; Ariel Vicars, B.A. Sociology

**MH 105  
(Long  
Presentations)**

**Flight Delay Dynamics: Unraveling the Impact of Airport-Network-Spilled Propagation on Airline On-Time Performance**

Yajun Lu, Assistant Professor, Analytics & Operations Management

**Disability, the Vice Presidency, and Presidential Succession**

Wesley Bishop, Assistant Professor of History

**MH 109  
(Long  
Presentations)**

**Developing a Shared Governance Model for JSU**

Heidi Dempsey, Faculty Senate President and Professor of Psychology; Christie Shelton, Provost/SVPAA

**Murder and Political Wrangling on the Creek-Alabama Frontier: Caldwell v. Alabama and the Murder of Fushatchee Yoholo**

Tamara Levi, Professor, History and Foreign Languages

# SEQUENTIAL SESSIONS TWO (2:00-3:50)

## Time & Location    Session

3:00-3:50 am

**MH B01  
(Short  
Presentations)**

**Enhancing Digital Forensics Education: A Comparative Analysis of Licensed and Freeware Tools Through Hands-On Lab Experiences**

Sadik Arin, Assistant Professor, Criminal Justice and Forensic Investigation

**Interprofessional Education in Cervical Spine Injury Management**

Jennifer Burgett, Assistant Professor and Clinical Education Coordinator for the Masters in Athletic Training Program; Chris Clark, Assistant Professor and Program Director for Master's in Athletic Training; Dave Kean, Assistant Professor in the Master's in Athletic Training; Allen Gilbert, Associate Professor and Coordinator of Graduate Sport Management Program

**The Oral Histories of Alabama Higher Education**

Karlie Johnson, History, Geography, and Anthropology Librarian; Dr. Wesley Bishop, Assistant Professor of History and Kim Westbrook, Fine Arts Librarian

## Additional Notes:

# PRESENTATION FORMATS

## Short Presentations

Short Research Presentation (15 minutes) - Formal presentations on a topic of one or more faculty member's choosing (research paper, project, scholarship, or current work in progress). - Formal presentations about a topic of a faculty member's choosing (this may include a research paper, project, scholarship, or current work in progress).

- Individual presentations will last a maximum of 15 minutes
- Presentation times will vary throughout the day
- Presentations will be grouped three to a session within a one-hour timeframe to encourage audience attendance
- Presentations will be judged as part of a competition for "Best Short Presentation"
- The awardee will receive a congratulatory certificate for the "Best Short Presentation"

## Long Presentations

Long Research Presentation (25 minutes) - Formal presentations on a topic of the faculty member's choosing (research paper, project, scholarship, or current work in progress).

- Individual presentations will last a maximum of 25 minutes.
- Presentation times will vary throughout the day
- Q&A times and audience discussion must be included within the faculty member's 25-minute time limit
- Presentations will be grouped two to a session within a 50-minute timeframe to encourage audience attendance
- Presentations will be judged as part of a competition for "Best Long Presentation"
- The awardee will receive a congratulatory certificate for the "Best Long Presentation"

# PRESENTATION FORMATS

## Panel Presentations

Panel Presentation (50 minutes) - Collaborative discussion of a focused research, scholarship, or creative theme.

- Panel presentation topics are selected by the faculty member(s) submitting the proposal--submitting faculty member is responsible for recruiting fellow panel members (up to 6 members)
- Panel topics may cover the panel's collective research, scholarship, or creative work
- Collaboration on previous research is not required among panel members
- Only one panel session will take place per 50-minute time slot
- Panel presentations will be judged as part of a competition for "Best Panel Presentation." The awardees will receive a congratulatory certificate for "Best Panel Presentation"

## Other/Creative Presentations

Other Presentation (25 minutes) - Other" presentations include creative, musical, display, or performance pieces. Group presentations are allowed.

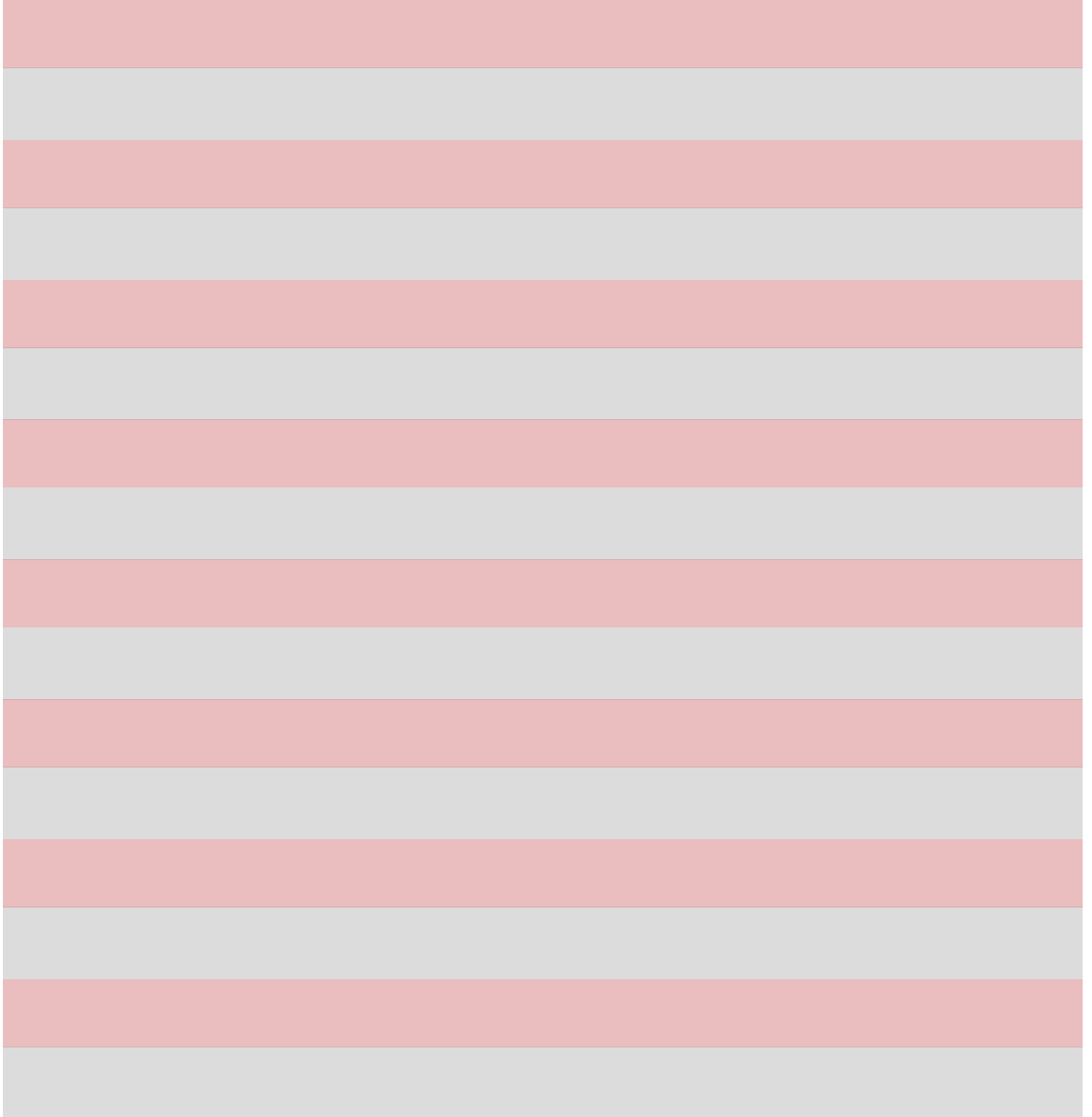
- Presentations will run in 25-minute increments during designated time slots
- Presentations take place in the Atrium of Merrill Hall
- Other/Creative presentations will be judged as part of a competition for "Best Creative Presentation"
- The awardee(s) will receive a congratulatory certificate for the "Best Creative Presentation"

## Poster Presentations

Poster Presentation (1 hour) - Visual display of individual faculty's research, scholarship, or creative work.

- Posters will be displayed in the Atrium at Merrill Hall
- Poster backing, push pins, and easels will be provided
- Poster interpretation is up to the presenter (including poster size and format)
- Faculty may bring posters previously presented at other events or create a poster specifically for the FRS
- During judging, faculty will be available to answer questions and elaborate on their work
- Posters will be judged as part of a competition for "Best Poster Presentation"
- The awardee will receive a congratulatory certificate for the "Best Poster Presentation"

## CONCLUDING THOUGHTS...





# **AWARDS RECEPTION**

---

**5:00 PM**

**ATRIUM**

**MERRILL HALL**

---

**WELCOME & THANKS**

**MICA MECHAM**

**PRESENTATION OF**

**AWARDS**

**FRS COMMITTEE**

**MEMBERS**

---

**CLOSING REMARKS**

# **SPECIAL THANKS TO THE 2024 FACULTY RESEARCH SYMPOSIUM VOLUNTEER JUDGES**

**PAULA BARNETT-ELLIS**

**ALLISON BOSWELL**

**RYAN BURNS**

**SARAH BURNS**

**MICHAEL BURNS**

**KATHRYN CATLIN**

**CHRIS CLARK**

**TALEAH COLLUM**

**DAVID DEMPSEY**

**HEIDI DEMPSEY**

**ARUP GHOSH**

**JOHN-BAUER GRAHAM**

**BEN GROSS**

**BETSY GULLEDGE**

**LAURIE HEATHCOCK**

**KARLIE JOHNSON**

**MAJID KOOZEHCHIAN**

**GINA MABREY**

**PAIGE MCKERCHAR**

**MARK SCIUCHETTI**

**STACI STONE**

**KELLEY SWATZELL**

**MONICA TRIFAS**

**BRIANNA TURGEON**

**FALYNN TURLEY**

**KIMBER WICKERSHAM**

# SPECIAL THANKS TO THE 2024 FACULTY RESEARCH SYMPOSIUM COMMITTEE MEMBERS



Ms. Mica Mecham  
Faculty Commons



Ms. Brandy Roberts  
Faculty Commons



Dr. Gina Mabrey  
Kinesiology



Dr. Chris Clark  
Kinesiology



Dr. Sean Chenoweth  
Chem & Geo Sciences



Dr. Falynn Turley  
Fin, Ec., & Acct



Ms. Kimberly Westbrooks  
Library Services



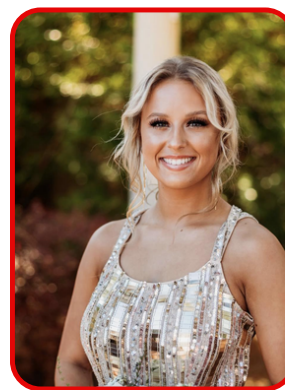
Dr. Jenna Ridlen  
Biology



Ms. Maria James  
Business & Industry



Dr. Brianna Turgeon  
Sociology



Ms. Kimberly Carter  
FC Student Worker